

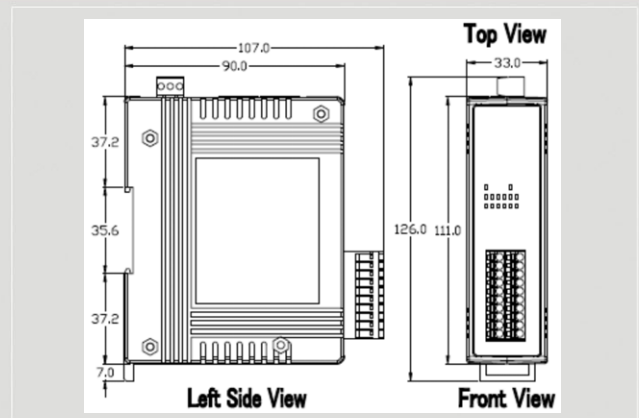


# EtherNet/IP Series Products

## EtherNet/IP module – 6 DI and 6 Relay



**EIP-2060**



**Dimensions**

The EIP-2060 is a remote I/O module with 6 DIs and 6 relays. It is designed as an EtherNet/IP adapter. With 2 Ethernet ports, the EIP-2055 allows daisy chain connection which permits the flexibility in locating devices, eases installation and lowers infrastructure costs. Users can obtain the I/O as well as the connection status of the EIP-2060 by the LEDs. In addition, ICPDAS provides software utility to easily configure and test the EIP-2000 modules via Ethernet.

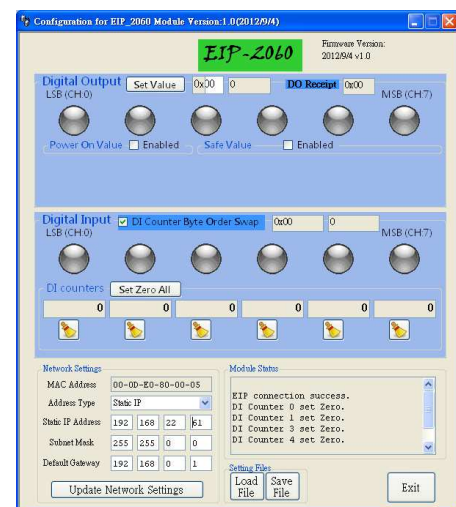
### Features

- Transfer protocol: EtherNet/IP
- Powerful 32-bit MCU handles efficient network traffic
- 10/100 Base-TX Ethernet, RJ-45 x 2 (Auto-negotiating, auto MDI/MDIX, LED Indicators)
- Support ARP, TCP, UDP, ICMP, DHCP, BOOTP and TFTP protocols
- Easy firmware update via Ethernet
- Removable terminal block connector
- LED display to indicate the I/O status
- Built-In I/O
  - DI/Counter: 6 Channels
  - Relay: 6 Channels
- Power-On-Value
- Safe-Value
- RoHS compliant

### Utility Features

ICPDAS provides the EIP-2000 configuration utility for Windows 2K/XP/Vista and Win 7.

- Network parameters configuration
- Settings for power-on value and safe value.
- DI counters inspection
- Easy test to transmit/receive the I/O status by EtherNet/IP
- Setting files management



### Wire connection

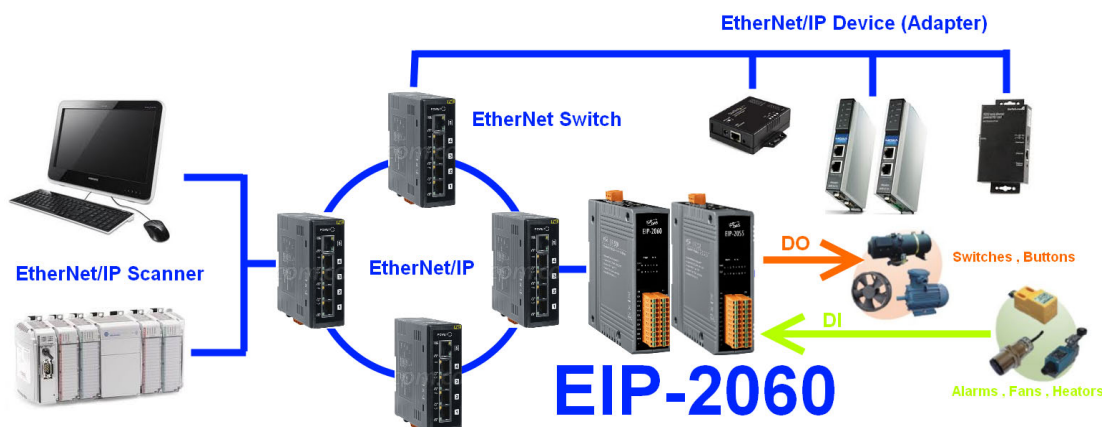
| Input                | ON          | OFF        |
|----------------------|-------------|------------|
| Relay Contact (Dry)  | Relay Close | Relay Open |
| Open Collector (Dry) | ON          | OFF        |
| Relay Contact (Wet)  | Relay Close | Relay Open |
| NPN Output (Wet)     | ON          | OFF        |
| Output               | ON          | OFF        |
| Relay                |             |            |



## Hardware Specifications

| Digital Input                  |                           |   |
|--------------------------------|---------------------------|---|
| Channels                       |                           | 6   |
| Input Type                     |                           | Dry Contact: Source, Wet Contact: Sink / Source                   |
| Dry Contact Level              |                           | Off Voltage Level: Open      On Voltage Level: Close to GND       |
| Wet Contact Level              |                           | Off Voltage Level: +4V max      On Voltage Level: +10 V ~ +50 V   |
| Counters                       | Channels                  | 6   |
|                                | Max. Counts               | 32-bit (4294967295)   |
|                                | Max. Input Frequency      | 5KHz  |
| Photo-Isolation                |                           | 3750 V <sub>DC</sub>  |
| Digital Output                 |                           |   |
| Channels                       |                           | 6   |
| Output Type                    |                           | Form A(SPST-NO)   |
| Contact Rating(Resistive Load) | 5A 250VAC (47~63Hz)       |   |
|                                | 5A 30 V <sub>DC</sub>     |   |
| Operate Time                   |                           | 10ms max.   |
| Release Time                   |                           | 5ms max.  |
| Insulation Resistance          |                           | 1,000MΩs at 500 V <sub>DC</sub>                                   |
| Dielectric Strength            | Between Open Contact      | 1000VAC (1 min.)  |
|                                | Between Coil and Contacts | 3000VAC (1 min.)  |
| Endurance                      | Mechanical                | 20,000,000 times min.   |
|                                | Electrical                | 100,000 times min.  |
| Communication Interface        |                           |   |
| Connector                      |                           | 10/100 Base-TX, 8-pin RJ-45 x 2    Support daisy chain connection |
| Standard Supported             |                           | IEEE 802.3 Ethernet/IP  |
| Power                          |                           |   |
| Input Voltage Range            |                           | 10V ~ 30V   |
| Power Consumption              |                           | 1.6W  |
| Mechanism                      |                           |   |
| Installation                   |                           | DIN-Rail  |
| Dimensions                     |                           | 110mm x 90mm x 33mm (H x W x D)                                   |
| Environment                    |                           |   |
| Operating Temperature          |                           | -25℃ ~ +75℃   |
| Storage Temperature            |                           | -30℃ ~ +80℃   |
| Humidity                       |                           | 10 ~ 90% RH, non-condensing                                       |

## Applications



## Ordering Information

|                    |  |
|--------------------|--|
| <b>EIP-2060 CR</b> | Isolated 6-ch DI & 6 Relay Output EtherNet/IP Module |
|--------------------|--|