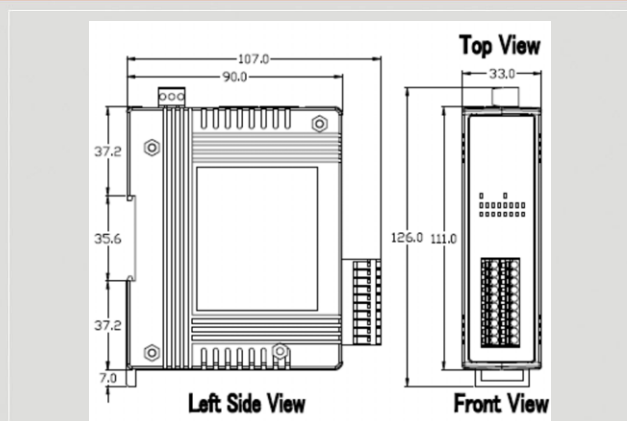


Isolated 8-ch DI and 8-ch DO EtherNet/IP module



EIP-2055



Dimensions

The EIP-2055 is a remote digital I/O module with 8 inputs and 8 outputs. It is designed as an EtherNet/IP adapter. With 2 Ethernet ports, the EIP-2055 allows daisy chain connection which permits the flexibility in locating devices, eases installation and lowers infrastructure costs. Users can obtain the I/O as well as the connection status of the EIP-2055 by the LEDs. In addition, ICPDAS provides software utility to easily configure and test the EIP-2000 modules via Ethernet.

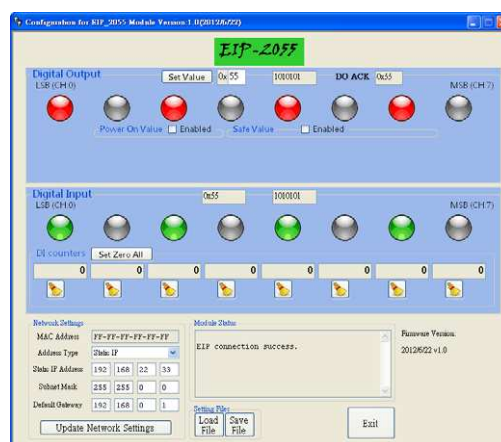
Features

- Transfer protocol: EtherNet/IP
- Powerful 32-bit MCU handles efficient network traffic
- 10/100 Base-TX Ethernet, RJ-45 x 2 (Auto-negotiating, auto MDI/MDIX, LED Indicators)
- Support ARP, TCP, UDP, ICMP, DHCP, BOOTP and TFTP protocols
- Easy firmware update via Ethernet
- Removable terminal block connector
- LED display to indicate the I/O status
- Built-In I/O
 - DI/Counter: 8 Channels
 - DO: 8 Channels
- Power-On-Value
- Safe-Value
- RoHS compliant

Utility Features

ICPDAS provides the EIP-2000 configuration utility for Windows 2K/XP/Vista and Win 7.

- Network parameters configuration
- Settings for power-on value and safe value.
- DI counters inspection
- Easy test to transmit/receive the I/O status by EtherNet/IP
- Setting files management



Wire connection

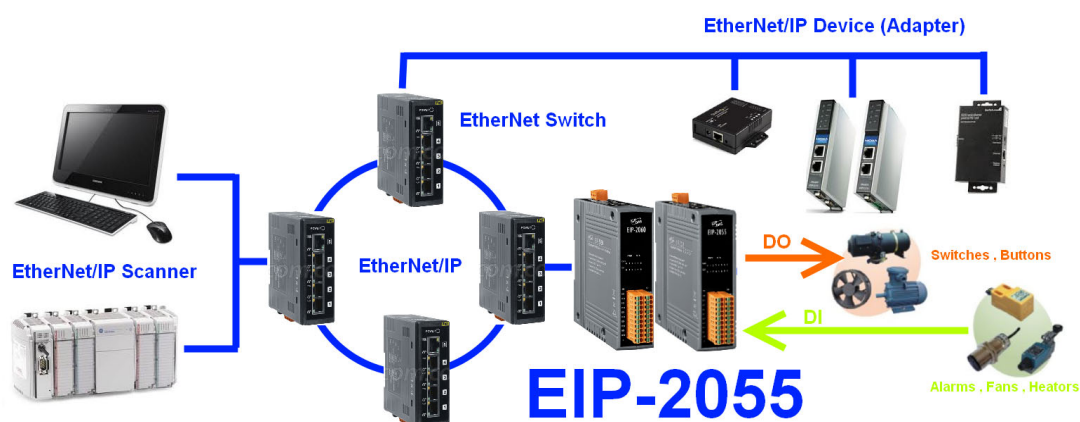
Input	ON	OFF
Relay Contact (Dry)	Relay Close	Relay Open
Open Collector (Dry)	ON	OFF
Relay Contact (Wet)	Relay Close	Relay Open
NPN Output (Wet)	ON	OFF
Output	ON	OFF
Drive Relay		
Resistance Load		



Hardware Specifications

Digital Input		
Channels		8
Input Type		Dry Contact: Source, Wet Contact: Sink / Source
Dry Contact Level		Off Voltage Level: Open On Voltage Level: Close to GND
Wet Contact Level		Off Voltage Level: +4V max On Voltage Level: +10 V ~ +50 V
Counters	Channels	8
	Max. Counts	32-bit (4294967295)
	Max. Input Frequency	5KHz
Photo-Isolation		3750 V _{DC}
Digital Output		
Channels		8
Isolation Voltage		3750 V _{DC}
Type		Open Collector
Sink/Source(NPN/PNP)		Sink
Load Voltage		+3.5 ~ +50 V
Max. Load Current		700mA per channel
Communication Interface		
Connector		10/100 Base-TX, 8-pin RJ-45x2 . Support daisy chain connection
Standard Supported		IEEE 802.3 Ethernet/IP
Power		
Input Voltage Range		10V ~ 30V
Power Consumption		1.6W
Mechanism		
Installation		DIN-Rail
Dimensions		110mm x 90mm x 33mm (H x W x D)
Environment		
Operating Temperature		-25℃ ~ +75℃
Storage Temperature		-30℃ ~ +80℃
Humidity		10% ~ 90%

Applications



Ordering Information

EIP-2055 CR	Isolated 8-ch DI & 8-ch DO EtherNet/IP Module (RoHS)
--------------------	--