

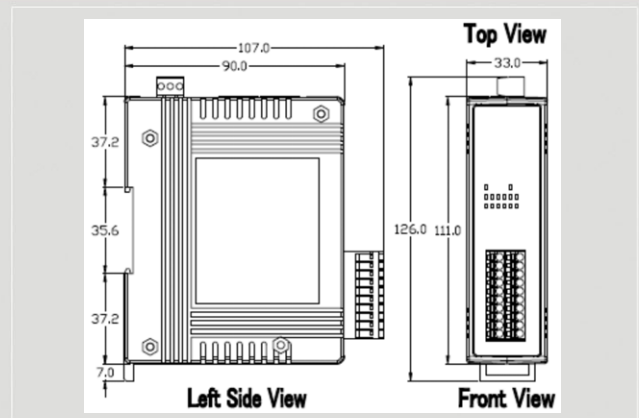


# EtherNet/IP Series Products

## Isolated 16-ch DI EtherNet/IP module



**EIP-2051**

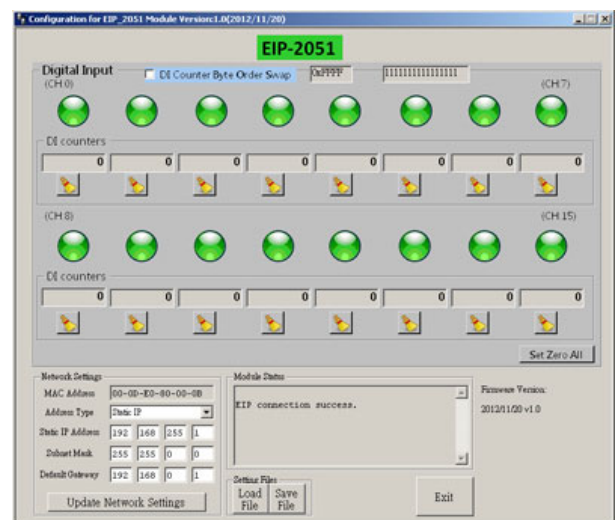


**Dimensions**

The EIP-2051 is a remote digital input module with 16 inputs. It is designed as an EtherNet/IP adapter. Users can obtain the input status as well as the connection status of the EIP-2051 by the LEDs indication. In addition, ICPDAS provides software utility to easily configure and test the EIP-2000 modules via Ethernet.

### Features

- Transfer protocol: EtherNet/IP
- Powerful 32-bit MCU handles efficient network traffic
- 10/100 Base-TX Ethernet, RJ-45 x 2 (Auto-negotiating, auto MDI/MDIX, LED Indicators)
- Support ARP, TCP, UDP, ICMP, DHCP, BOOTP and TFTP protocols
- Easy firmware update via Ethernet
- Removable terminal block connector
- LED display to indicate the I/O status
- Built-In I/O
  - DI/Counter: 16 Channels
- RoHS compliant



### Utility Features

ICPDAS provides the EIP-2000 configuration utility for Windows 2K/XP/Vista and Win 7.

- Network parameters configuration
- DI counters inspection
- Functions configuration such as DI counters set zero
- Easy test to transmit/receive the I/O status by EtherNet/IP
- Setting files management

### Wire connection

Input	ON	OFF
Relay Contact (Dry)		
Open Collector (Dry)		
Relay Contact (Wet)		
NPN Output (Wet)		



## Hardware Specifications



### Digital Input

Channels	16	
Input Type	Dry Contact: Source, Wet Contact: Sink / Source	
Dry Contact Level	Off Voltage Level: Open	On Voltage Level: Close to GND
Wet Contact Level	Off Voltage Level: +4V max	On Voltage Level: +10 V ~ +50 V
Counters	Channels	16
	Max. Counts	32-bit (4294967295)
	Max. Input Frequency	5 kHz
Photo-Isolation	3750 V <sub>DC</sub>	
Connector	10/100 Base-TX, 8-pin RJ-45 x 2. Support daisy chain connection.	
Standard Supported	IEEE 802.3 Ethernet/IP	

### Power

Input Voltage Range	10V ~ 30V
Power Consumption	1.6W

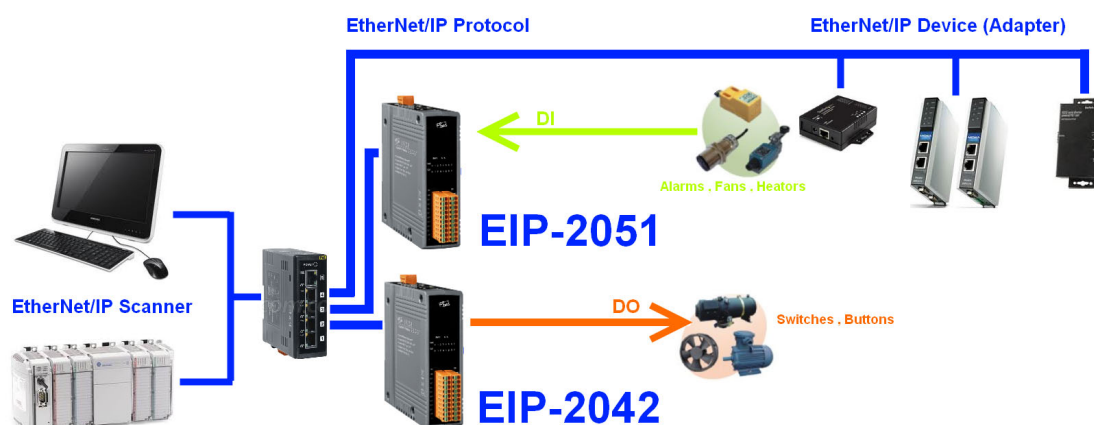
### Mechanism

Installation	DIN-Rail
Dimensions	110mm x 90mm x 33mm (H x W x D)

### Environment

Operating Temperature	-25°C ~ +75°C
Storage Temperature	-30°C ~ +80°C
Humidity	10% ~ 90%

## Applications



## Ordering Information

<b>EIP-2051 CR</b>	Isolated 16-ch DI EtherNet/IP Module (RoHS)
--------------------	---