



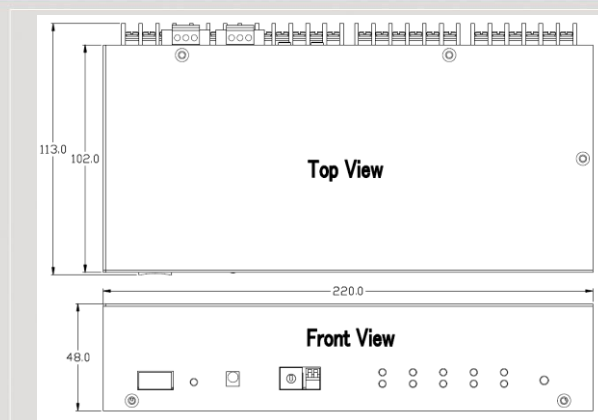
# M2M Series Products



## IR Controlled 10-channel High Power Relay Module



**IR-310-RM**

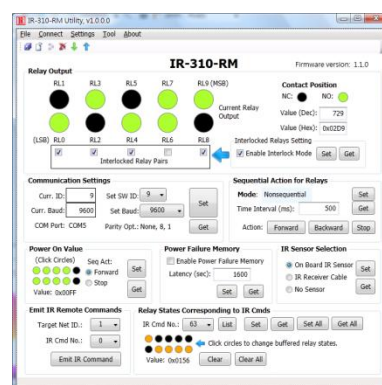


**Dimensions**

The IR-310-RM is a 10-channel high power relay module designed for the power control of various appliances. The relay module can switch up to 10A loads. There are NO/NC switches and protection circuit for each channel. The relays can be controlled independently or sequentially by serial communication with Modbus RTU protocol, as well as by wireless IR remote control. There are also maximum 5 interlocked relay pairs for interlocked switching. The application field can be manual/automatic power switch, light scenario control and energy conservation etc.

### Features

- 10 channels high power relays: 5A x 6, 10A x 4
- Supports IR remote control (custom: 64 cmds, built-in: 32 cmds) for relay control
- NO & NC terminals for each channel
- Protection circuit for each channel
- Sequential relay control
- Supports maximum 5 interlocked relay pairs
- Power-on values and power failure memory
- Supports RS-232 / RS-485 serial interface
- Supports Modbus/RTU protocol (Slave)
- Modbus Network IDs: 1 ~ 15 (HW); 1 ~ 247 (SW)



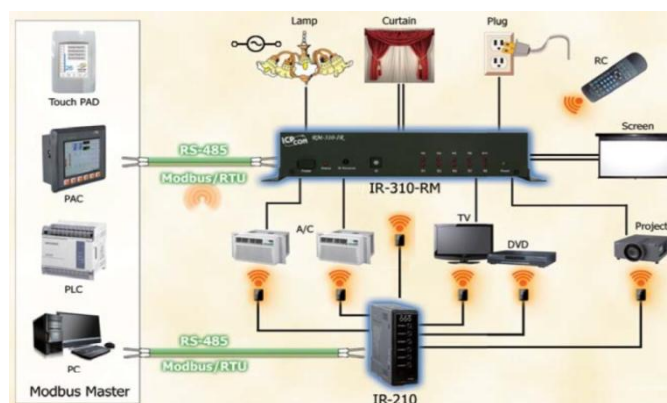
### Application

- e-Classroom service
- Lighting Scenario Control
- Home and Building Automation

### Utility Features

IR utility (including IR-310-RM utility) is the configuration tool for IR-310-RM.

- Can get/set separate or all settings from/to IR-310-RM.
- For relay output test and relay states indication.
- Control IR-310-RM to emit IR commands for an IR learning remote.





## Hardware Specifications

<b>Relay Outputs</b>	
Number of Outputs	10
Relay Types	Form C relay SPDT
Contact Rating	5A@220VAC for RL0, RL1 & RL6~RL9 10A@220VAC for RL2 ~ RL5 (Operating Temperature : 25°C)
Operate Time (Max.)	10 ms for RL0, RL1 & RL6 ~ RL9, 15 ms for RL2 ~ RL5
Release Time (Max.)	5 ms for RL0, RL1 & RL6 ~ RL9 10 ms for RL2 ~ RL5
Insulation Resistance	100 M Ohm min. at 500 VDC for RL0, RL1 & RL6~RL9 1000M Ohm min. at 500VDC for RL2~RL5
Life Time	Mechanical : $1 \times 10^7$ OPS Electrical : $1 \times 10^5$ OPS
<b>Serial Interface</b>	
COM1	RS-232 (TxD, RxD, GND)
COM2	RS-485 (DATA+, DATA-)
Baud Rate	9600 ~ 115200 bps (6 baud rates)
Protocol	Modbus/RTU (slave).
Modbus Net ID	Hardware: 1~15. Software: 1 ~ 247
<b>IR interface</b>	
IR Input	Onboard IR receiver
	3.5 mm audio jack for an IR receiver cable
IR Remote Commands	64 IR commands (#0~#63) corresponding to self-defined relay states. 32 IR commands (#192~#223) corresponding to built-in relay states.
<b>LED Display</b>	
1 LED as Power and IR indicator	
10 LEDs as Relay Output indicators	
<b>Power</b>	
Power supply	+12 V <sub>DC</sub>
<b>Mechanism</b>	
Dimensions	220 mm x 48 mm x 113 mm (W x H x L)
<b>Environment</b>	
Operating Temp.	-25 ~ +75°C
Storage Temp.	-30 ~ +80°C
Humidity	10 ~ 90% RH, non-condensing

## Ordering Information

IR-310-RM CR	IR Controlled 10-channel High Power Relay Module (RoHS)
--------------	---

## Accessories

CA-IR-001	IR receiver cable, 3 m
CA-IR-SH2251-5	Single-headed IR emitter cable (with adhesive pad, Ø 5 mm IRED, 2.5 m)
CA-IR-SH1251-360	Semi-sphere-headed IR receiver cable (with adhesive pad, 2.5 m, available soon)
FRA05-S12-SU	12 V/0.58 A (max) Power Supply
CA-002	DC connector to 2-wire power cable, 0.3 M
L108E	IR Learning Remote Control