

# Device Networking Access



EH2305-1Fm

## Industrial 5-Port Unmanaged Fast Ethernet Switch with Optical Fiber

■ ■ EH2305-1Fm/1Fs  
RoHS compliant



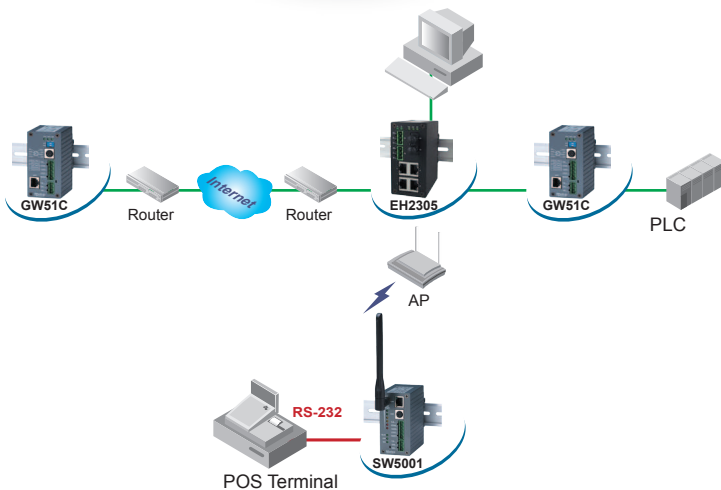
EH2305-1Fs

### Technology

- 10/100BaseT(X) (RJ45), 100BaseFX (SC/ST connector)
- Broadcast storm protection
- Support IEEE 802.3/ 802.3u/ 802.3x
- 10/100M, Full/Half-Duplex, MDI/MDI-X auto-detection
- Local area transmit distance of 2 Km with Multi-mode Fiber connections
- Long-haul transmit distance of 20 Km with Single-mode Fiber connections

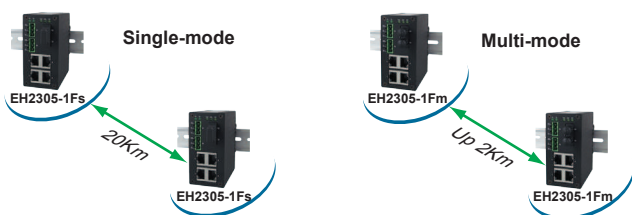
### Reliability

- Redundant dual DC power inputs
- Operating temperature ranges from -10~70°C
- Rugged high-strength housing
- DIN-Rail or wall mounting ability



The EH2305-1Fm/1Fs has a metal housing with 4 RJ-45 ports and one optical ST/SC port, it's designed to work in the industrial environment, such as in hazardous locations that comply with CE, FCC, UL and RoHS standards.

The EH2305 series protects itself from receiving too many broadcast packets. During normal use, broadcast packets will be forwarded to all ports except the source port. However, it will discard broadcast or multicast packets if the number of those packets exceeds a threshold in a preset period of time. When the preset period expires (about 800ms), it will then resume receiving broadcast or multicast packets until the threshold is reached again.



The EH2305 series provides two redundant power inputs that can be connected simultaneously to wide-range DC power sources. If one of the power inputs failure, the other live source acts as a backup to provide EH2305 series the power it needs automatically.

# Industrial 5-Port Unmanaged Fast Ethernet Switch with Optical Fiber

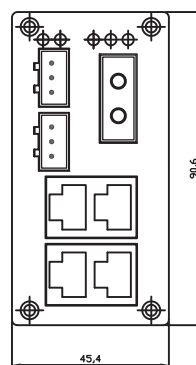
EH2305-1Fm/1Fs

| Specifications  |   |
|---|---|
| <b>Ethernet</b>   |   |
| Transmission rate   | 10/100Mbps                                |
| Ports   | 5   |
| 10/100Mbps  | 5   |
| Connector   | RJ-45 x 4 + Fs/Fm x 1                     |
| Auto MDI/MDI-X  | Yes                                       |
| <b>Power</b>  |   |
| Input   | DC 9~30V                                  |
| Connector   | Dual 3 pin 5.08mm pitch Terminal block    |
| Consumption   | 5.4Watts Max                              |
| <b>Environment</b>  |   |
| Operating   | -10°C ~ 70°C ( 14°F ~ 158°F )             |
| Storage   | -40°C ~ 85°C ( -40°F ~ 185°F ), 5%~95% RH |
| Notes:  |   |
| For UL policy the maximum operating temperature is 50°C, and the human body can tolerate maximum temperature is 70°C. |   |
| <b>Dimension</b>  |   |
| W x H x D   | 45.2mm x 90mm x 78mm                      |
| <b>Approval</b>   |   |

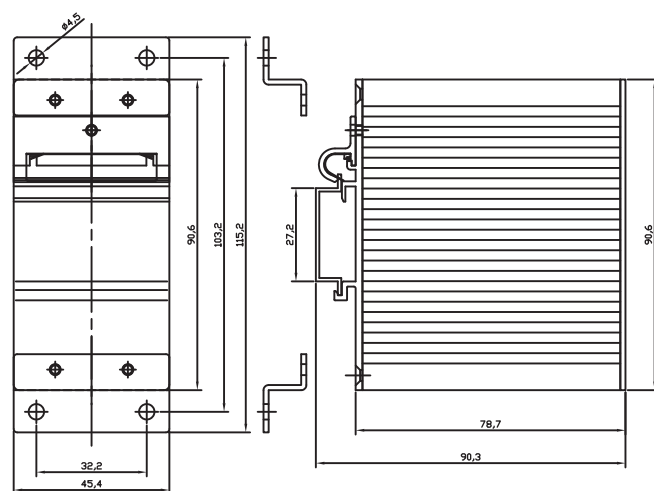
UL(Safety): UL60950-1, CSA C22.2 No.60950-1-03  
 FCC(EMI): FCC 47 CFR Part15, Subpart B, Class A  
 ICES-003, Class A  
 ANSI C63.4-2003  
 CE(EMI): EN55032:2012+AC:2013, Class A  
 EN 61000-3-2:2014, Class A  
 EN 61000-3-3: 2013  
 CE(EMS): EN 55024:2010  
 IEC 61000-4-2:2008  
 IEC 61000-4-3:2010  
 IEC 61000-4-4:2012  
 IEC 61000-4-5:2014  
 IEC 61000-4-6:2013  
 IEC 61000-4-8:2009  
 IEC 61000-4-11:2004  
 Shock: IEC 60068-2-27  
 Free Fall: IEC 60068-2-32  
 Vibration: IEC 60068-2-6  
 High Altitude: Certified for 4000m altitude according to IEC 60068-2-13  
 RoHS: Lead(Pb) Free  
 MTBF: 471160 hrs(25°C) / 53.79 years(25°C)  
 Warranty: 5 years

| Optional Accessories   |   |
|------------------------|---|
| <b>Power adapter</b>   | UN315-1212 (US-Y):<br>Y-Type power adapter, 100~240VAC input,<br>1.25A @ 12VDC output, US plug, LV6<br><br>UNE315-1212 (EU-Y):<br>Y-Type power adapter, 100~240VAC input,<br>1.25A @ 12VDC output, EU plug, LV6 |
| Ordering information   |   |
| <b>1P1EH23051FM01G</b> | Industrial 5-port Unmanaged Fast Ethernet Switch with 4x 10/100TX & 1x 10/100FX Multi-mode  |
| <b>EH2305-1F</b>       |   |
| <b>1P1EH23051FS01G</b> | Industrial 5-port Unmanaged Fast Ethernet Switch with 4x 10/100TX & 1x 10/100FX Single-mode   |
| <b>EH2305-1Fs</b>      |   |

| Optical Fiber Specifications |                                  |                        |
|------------------------------|----------------------------------|------------------------|
| Speed                        | Fast Ethernet 100BaseFX          |                        |
| Mode                         | Multi-mode                       | Single-mode            |
| Connectors                   | ST                               | SC                     |
| Typical Distance             | 2Km(Max)                         | 20Km(Max)              |
| Cable Size Core /Cladding    | 62.5/125 um                      | 9/125 um               |
| Wavelength                   | 1270(Min)~1360(Max) nm           | 1263(Min)~1360(Max) nm |
| Max. TX Power                | -14 dBm                          | -8 dBm                 |
| Min. TX Power                | -19 dBm                          | -15 dBm                |
| RX Sensitivity               | -34 dBm(Typical)<br>-32 dBm(Max) | -32 dBm(Max)           |
| Link Budget                  | ----                             | ----                   |
| Saturation / Overload        | ----                             | ----                   |
| Typical Budget               | ----                             | ----                   |



Front-panel front view



Backboard rear view

(Mount kit)

Housing side view

Atop Technologies, Inc.

TEL : +886-3-5508137  
 FAX : +886-3-5508131  
 sales@atop.com.tw  
 http : //www.atop.com.tw

Design and specification are subjected to change without notice.  
 All product names referenced herein are registered trademarks of their respective companies.



CA\_EH2305-1Fm/1Fs\_E : v6-171027