



μPAC-7186EX-MTCP series

Quick Start Manual

Wrote by Mac Cho

Version 1.00

Date 2007/11/08

Package Checklist

The package includes the following items:

- One μPAC-7186E hardware module
- One Quick Start Manual (this manual)
- One companion CD
- One RS-232 download cable (CA-0910)
- One 2.4 mm screw driver

Related Documents, Firmware and Software Utilities

Documents

- CD:\NAPDOS\Modbus\7186EX\Document\
- <http://ftp.icpdas.com/pub/cd/8000cd/napdos/modbus/7186ex/document/>

Firmware

- CD:\NAPDOS\Modbus\7186EX\Firmware\
- <http://ftp.icpdas.com/pub/cd/8000cd/napdos/modbus/7186ex/firmware/>

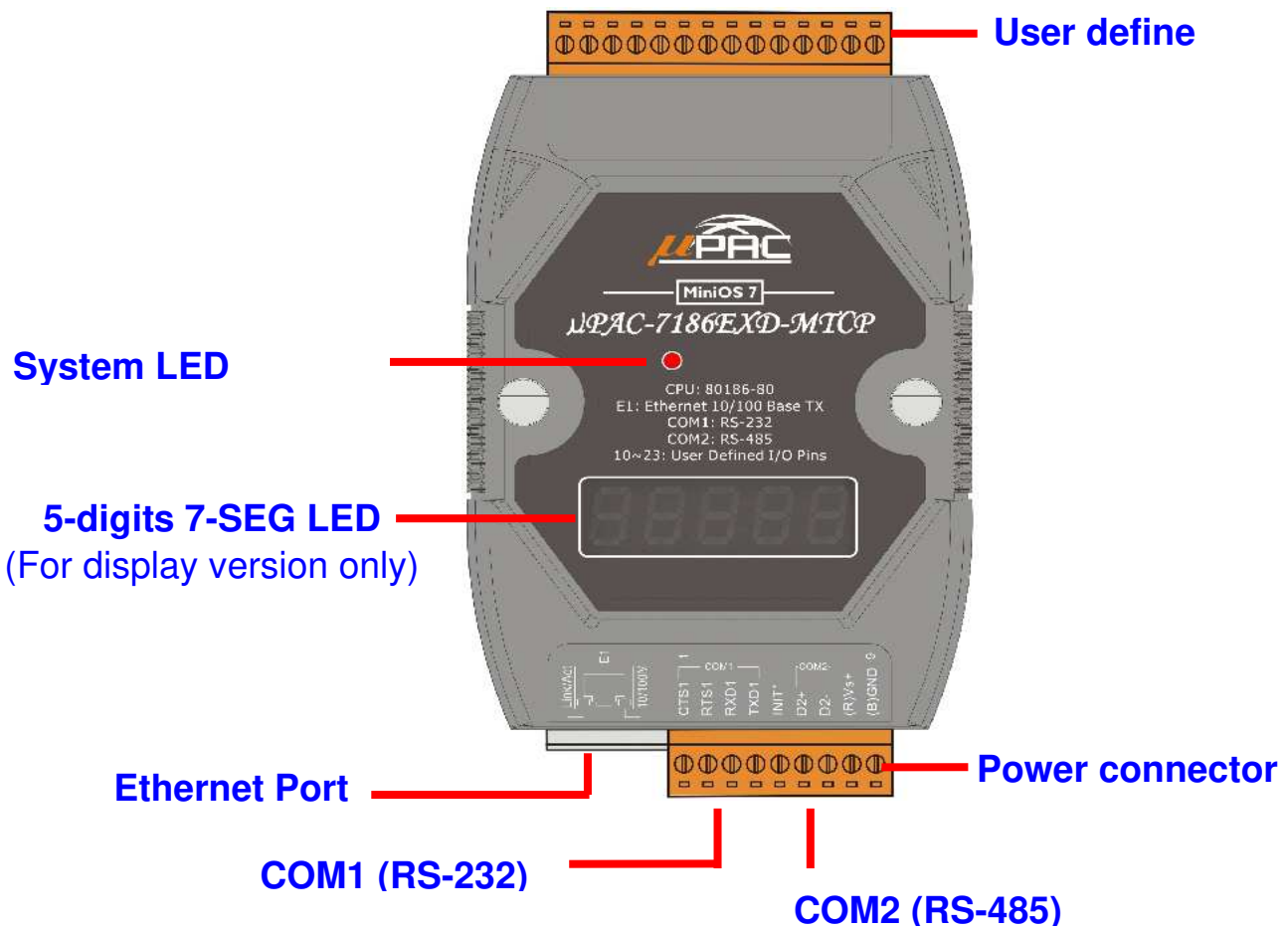
MiniOS7 Utility

- CD:\NAPDOS\Minios7\utility\Minios7_Utility\
- http://ftp.icpdas.com/pub/cd/8000cd/napdos/minios7/utility/minios7_utility/

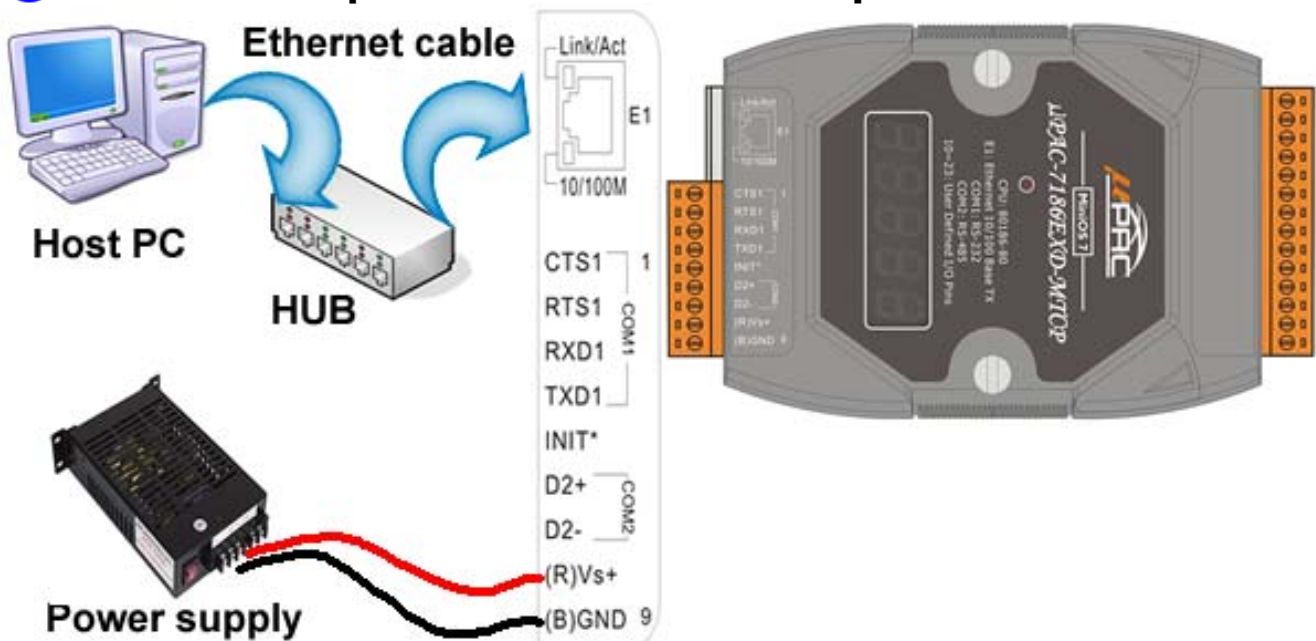
Modbus Utility

- CD:\NAPDOS\Modbus\Modbus_Utility\
- http://ftp.icpdas.com/pub/cd/8000cd/napdos/modbus/modbus_utility/

➡ View of the μ PAC-7186EX-MTCP



➡ Connect the μ PAC-7186E-MTCP to power and Host PC

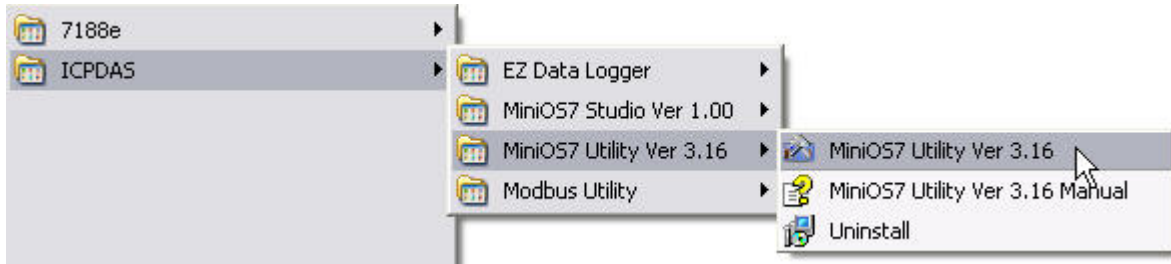


➡ Install MiniOS7 Utility

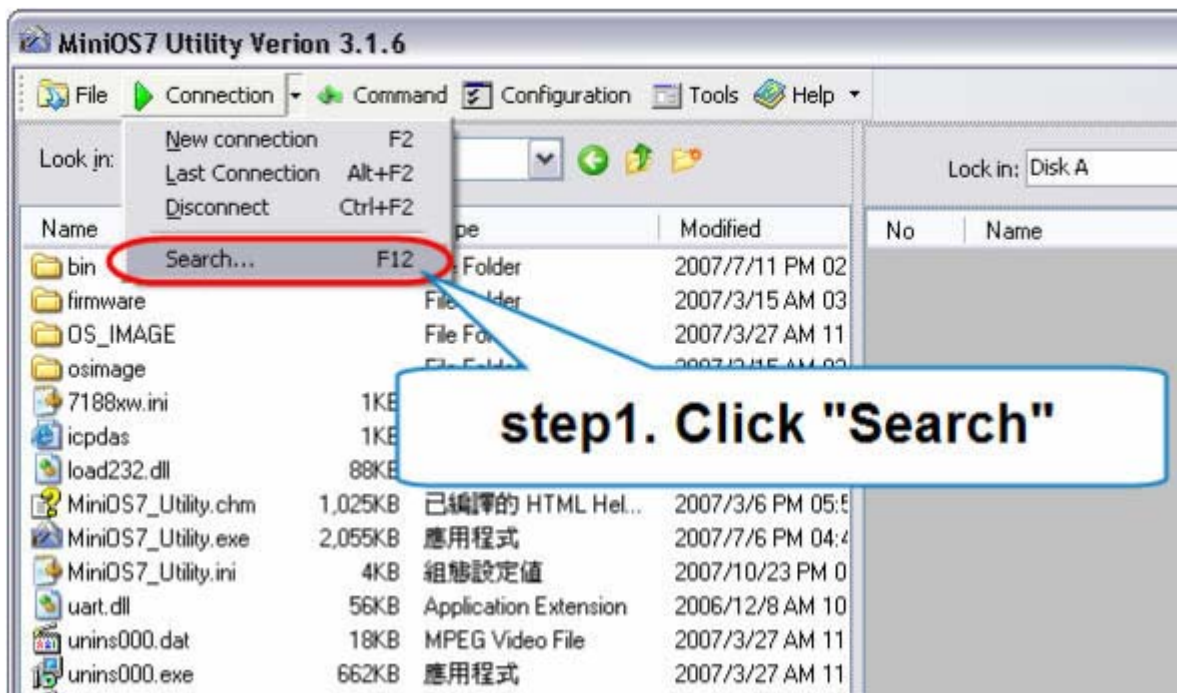
The installation software can be obtained from:

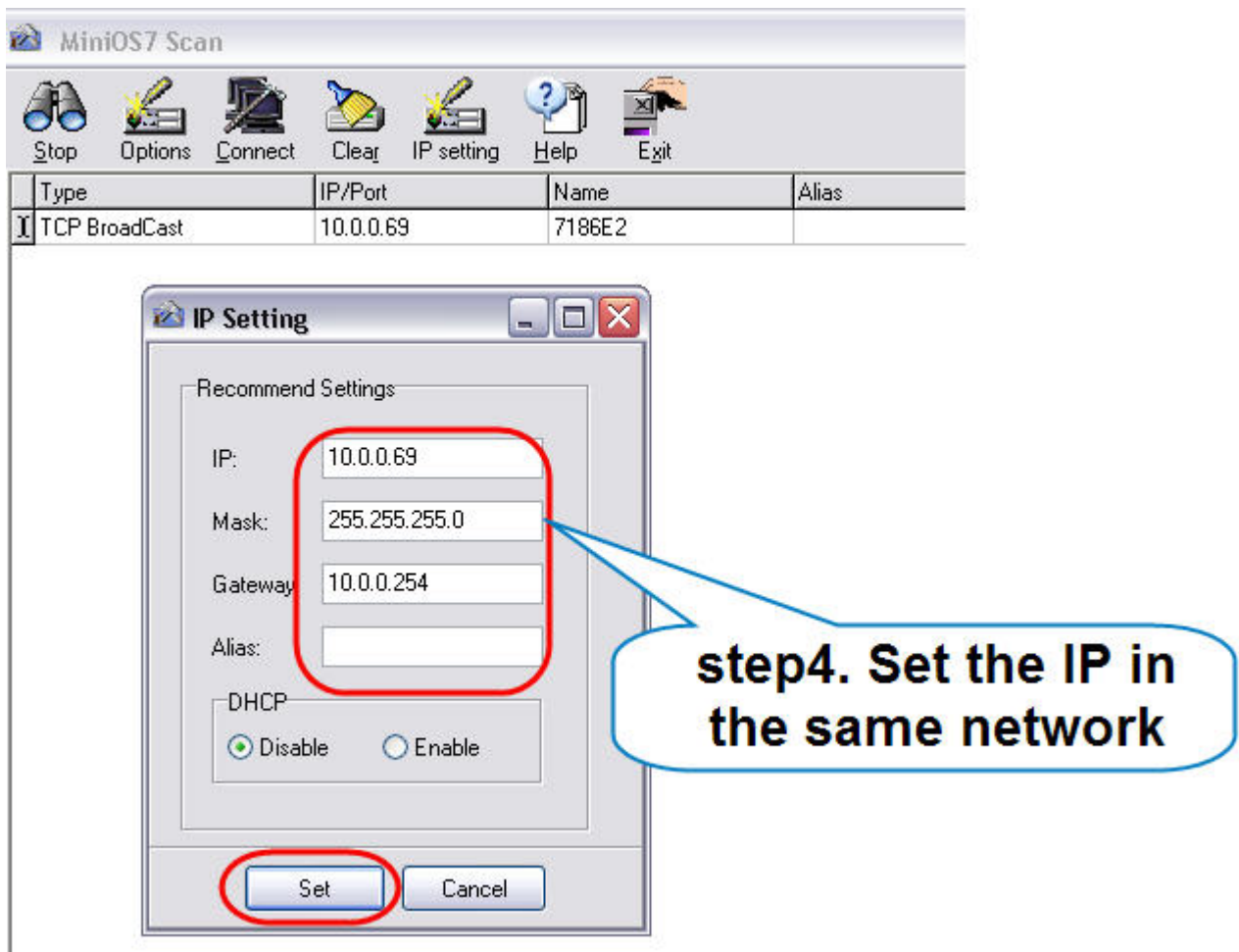
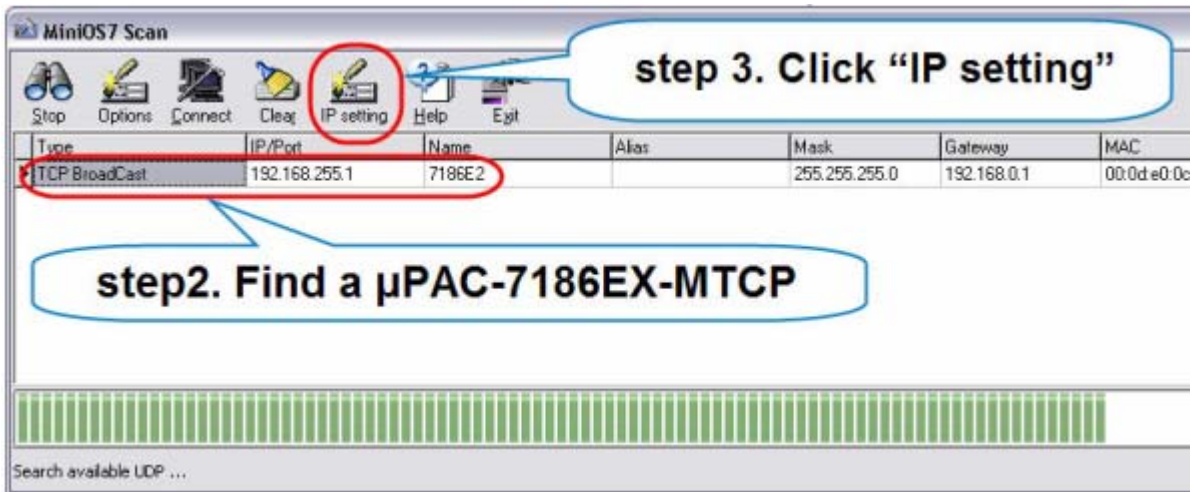
- CD:\8000\Napdos\minios7\utility\minios7_utility\
● http://ftp.icpdas.com/pub/cd/8000cd/napdos/minios7/utility/minios7_utility/

➡ Launch MiniOS7 Utility



➡ Set IP Address



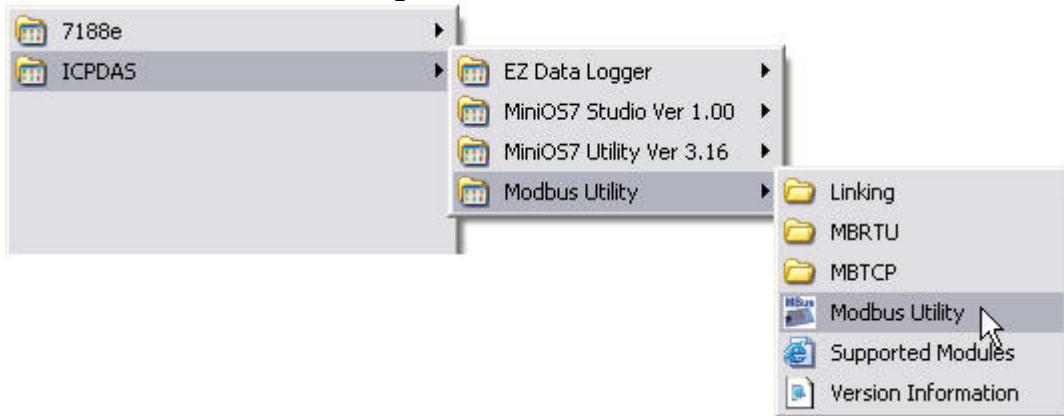


➔ Install Modbus Utility

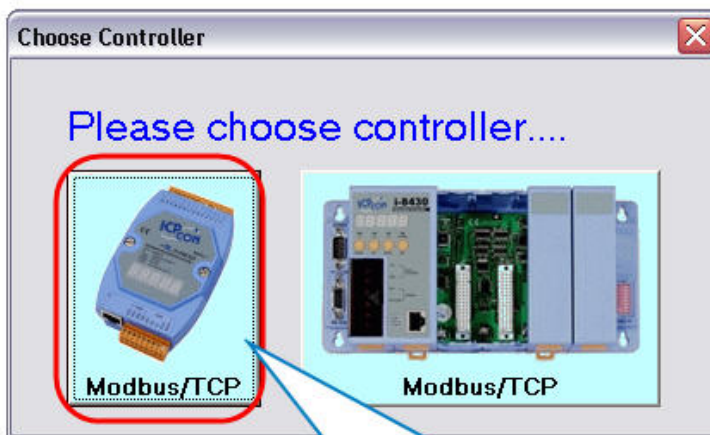
The installation software can be obtained from the following location.

- CD:\8000\Napdos\Modbus\Modbus_UTILITY\
- http://ftp.icpdas.com/pub/cd/8000cd/napdos/modbus/modbus_utility/

➔ Launch Modbus Utility



➔ Configure the settings of μ PAC-7186EX-MTCP



step1. Run the Modbus Utility and then click the left button

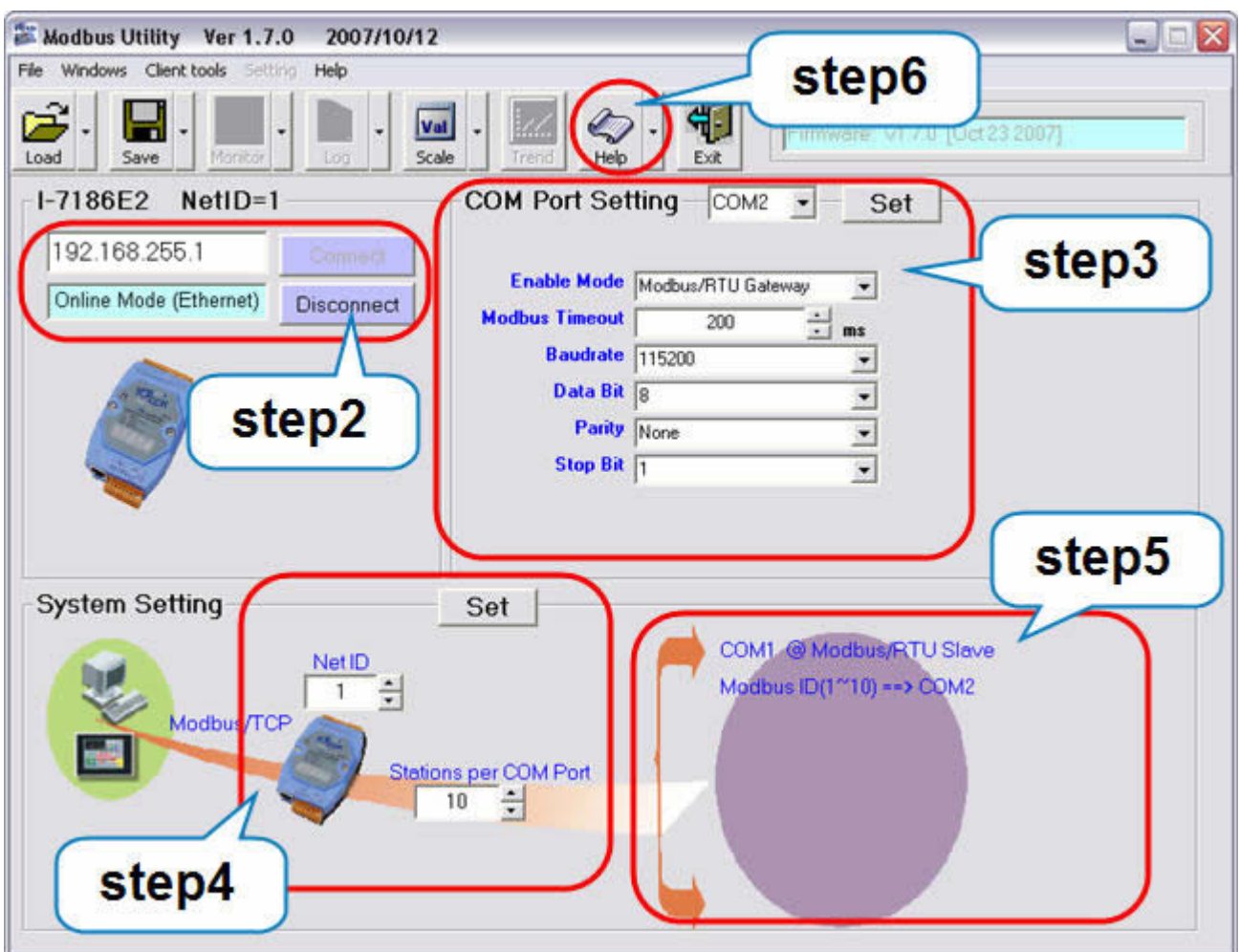
Step2. Key in the IP address and connect

Step3. Set COM Port mode and condition in “COM Port setting” area

Step4. Set NetID and Stations per COM Port in “System Setting”

Step5. The COM Port states shows on the right side at “System Setting”

Step6. For more information, please refer to the Help file



FAQ

1. How do I test the communication of μ PAC-7186EX-MTCP?

Ans: You can use the client tools (Modbus/TCP client and Modbus/RTU client) in Modbus Utility.

2. I need more COM Port, how can I do?

Ans: You can refer to the Xboard Selection Guide to add one board to the μ PAC-7186EX-MTCP.

http://www.icpdas.com/products/PAC/i-o_expansion/x_list.htm

Technical Support

1. ICP DAS Service : service@icpdas.com

2. μ PAC-7186EX-MTCP software Website:

http://www.icpdas.com/products/PAC/i-8000/modbus_web_download.htm